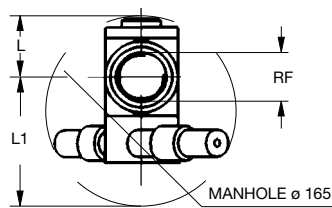
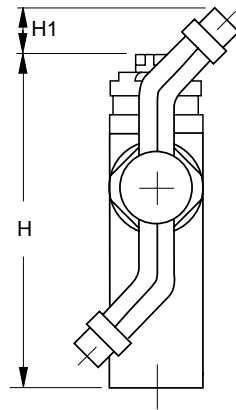


REACTION DRIVE



UBL

UBL series heads have been the object of a long development work, representing today one of the most advanced achievements in the industry.

They offer the following noticeable advantages, all into one only device :

- A carefully polished outside surface, which avoids danger of bacterial growth and easily cleaned.
- A unique inside piston design assuring low rotation speed and powerful jet impact.  
The piston works as a brake for the rotating head, which is powered by the reaction forces from the jets.  
This unique design, the robust construction, and the choice of using only the best quality materials, assure unsurpassed simplicity and the most favourable operation and maintenance cost.  
You do away with expensive repairs and part replacements.
- A fixed pre-determined ratio between the number of turns in the two axis, so that the each one single water jet path is slightly spaced from the preceding one.  
The cleaning action will then accurately cover the entire inside surface of the tank leaving no spot behind.
- Contain no lubricants and need no lubrication, avoiding any risk of product contamination in case of malfunction or breakdown.
- can be easily left in place at all times, being made out of polished stainless steel and pure Teflon®.
- Assure high reliability, through their design containing a minimum of moving parts.

Maximum operation temperature 110°

Maximum operating pressure 8 bar

Materials All metal parts B31 AISI 316L Stainless steel  
Seals E1 PTFE

Code	RF	DIA	Flow values (lpm) at different pressures (bar)					Dimensions (mm)			
			2	3	5	7	10	H	H1	L	L1
UBL 2750 B3	1"	6	61	75	97	115	135	165	10	40	85
UBL 3115 B3	1"	8	93	115	148	176	206	165	10	40	85