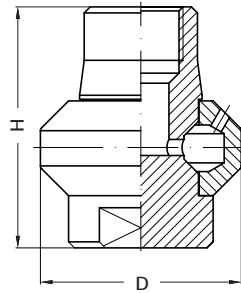


SINGLE AXIS HEADS

REACTION DRIVE



UBB

UBB heads are specially designed for applications where chemical attack from strong acids is to be expected, or when contamination to the product being handled is to be excluded, and are therefore entirely made out of PTFE.

Their rotary motion is produced from the reaction forces of their solid stream water jets, which are arranged in such a way that the inner tank surface is thoroughly covered when the head rotor is in motion.

The simple design, a two-piece construction, assures for long, maintenance free service.

The wide range of capacities and the choice among several spray patterns makes it easy to find the right product to suite a variety of different applications.

The codes shown in the capacity table refer to BSP threads. Our offices can supply coding for products designed with NPT threads.

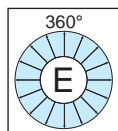
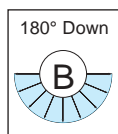
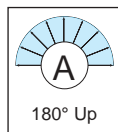
Coverage code

UBB 2319 E1 ↓ B
 A 180° up
 B 180° down
 E 360°

Material E1 PTFE

LT 95° C

LP 4.0 bar



Thread connection

Code	RF inch	Flow values at different pressures					WR mm	Dimensions mm	
		1.5	2.0	2.5	3.0	3.5		H	D
UBB 2319 E1EG	1/2	22.6	26.0	29.2	32.0	34.6	1.0	60	50
UBB 2320 E1EG	3/4	22.6	26.0	29.2	32.0	34.6	1.0	70	60
UBB 2720 E1EG		50.9	58.8	65.7	72.0	77.8	1.5		
UBB 3120 E1EG		85.5	98.2	110	120	130	1.5		
UBB 3182 E1EG		129	149	166	182	197	1.8		
UBB 3198 E1EG	1	140	162	181	198	214	2.2	75	70
UBB 3275 E1EG		194	225	251	275	297	2.3		
UBB 3355 E1EG		251	290	324	355	383	2.3		
UBB 3395 E1EG	2	279	323	361	395	427	2.3	110	124
UBB 3495 E1EG		350	404	452	495	535	2.4		
UBB 3590 E1EG		417	482	539	590	637	2.4		
UBB 3690 E1EG		488	563	630	690	745	2.4		
UBB 3985 E1EG	3	697	804	899	985	1064	2.4	150	175
UBB 4118 E1EG		834	963	1077	1180	1275	2.4		
UBB 4138 E1EG		976	1127	1260	1380	1491	2.4		

Please note the codes given in the above table refer to a 360° spray coverage.

Modify the product code as shown above for different spray coverage.